

Fig. 1. Spain, nominal GDP (2011: 1,088 bn €), real GDP (2011: 676 bn €), estimates after 2010  
<http://www.imf.org/external/pubs/ft/weo/2011/02/weodata/weoselgr.aspx>

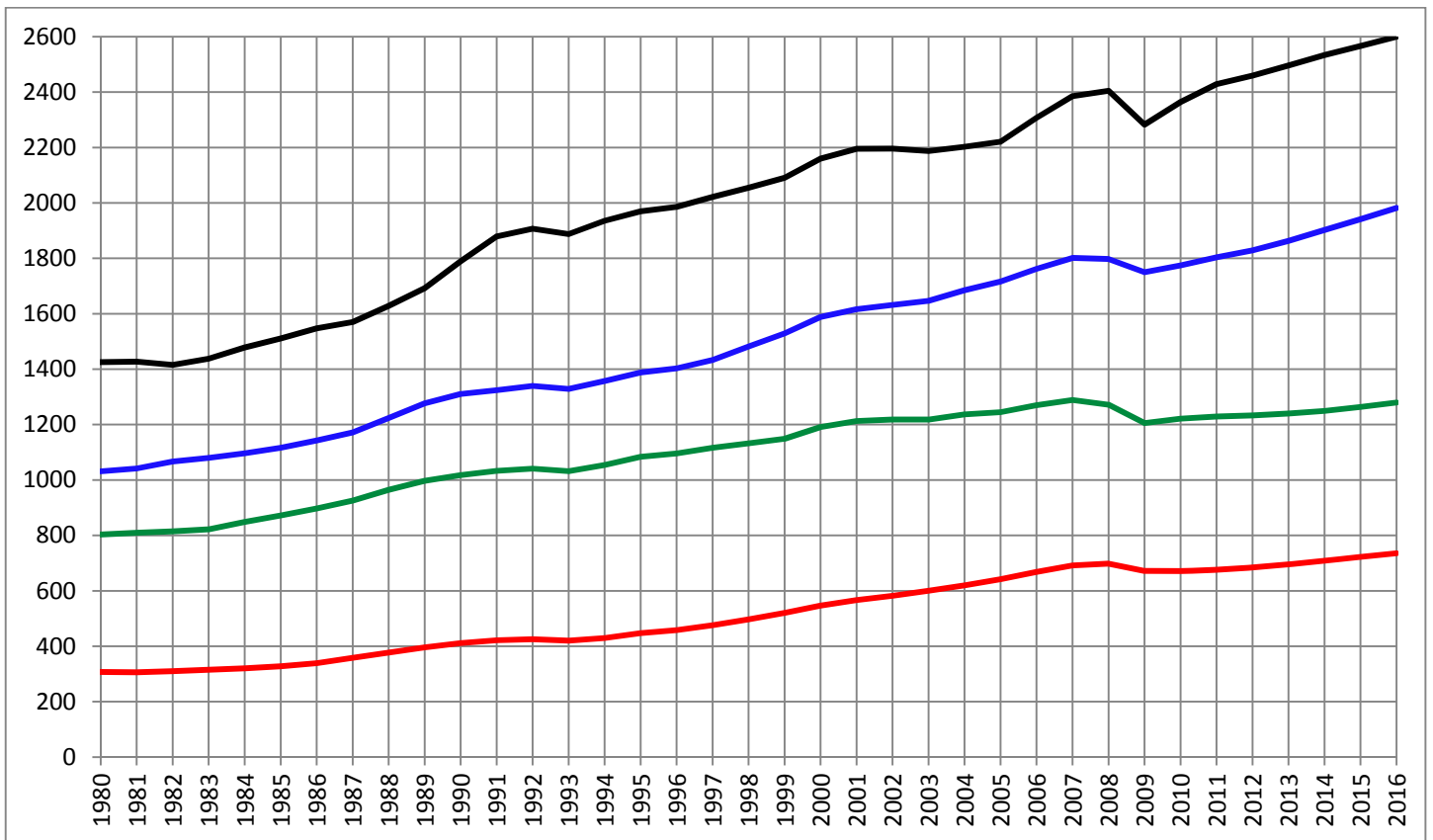


Fig. 2. Real GDP, Germany (2011: 2,428 bn €), France (1,804), Italy (1,229), Spain (676), estimates after 2010  
<http://www.imf.org/external/pubs/ft/weo/2011/02/weodata/weoselgr.aspx>

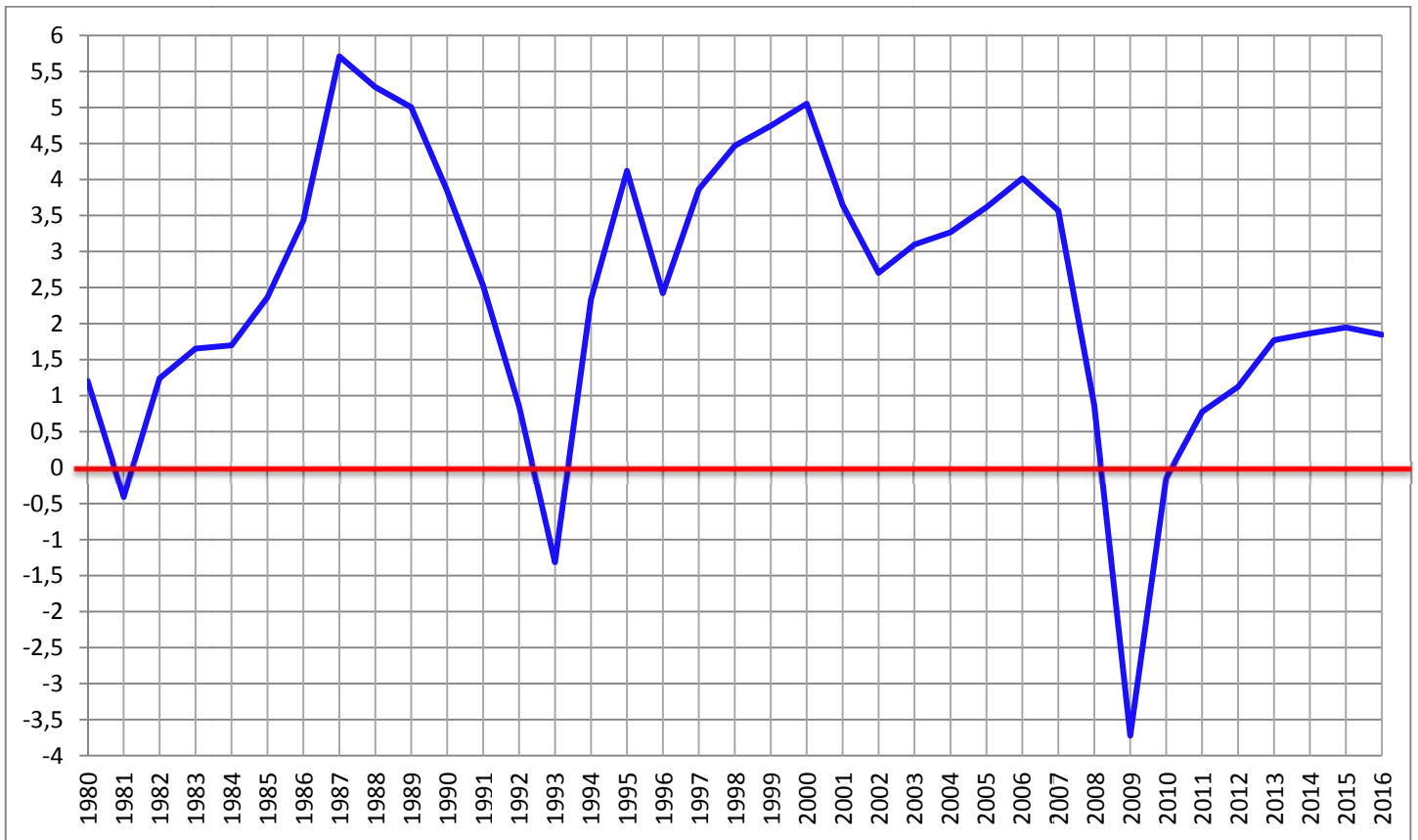


Fig. 3. Spain, real GDP growth (2011: 0,775; 2012: WEO update Jan. 2012: -1,7), estimates after 2010  
<http://www.imf.org/external/pubs/ft/weo/2011/02/weodata/weoselgr.aspx>

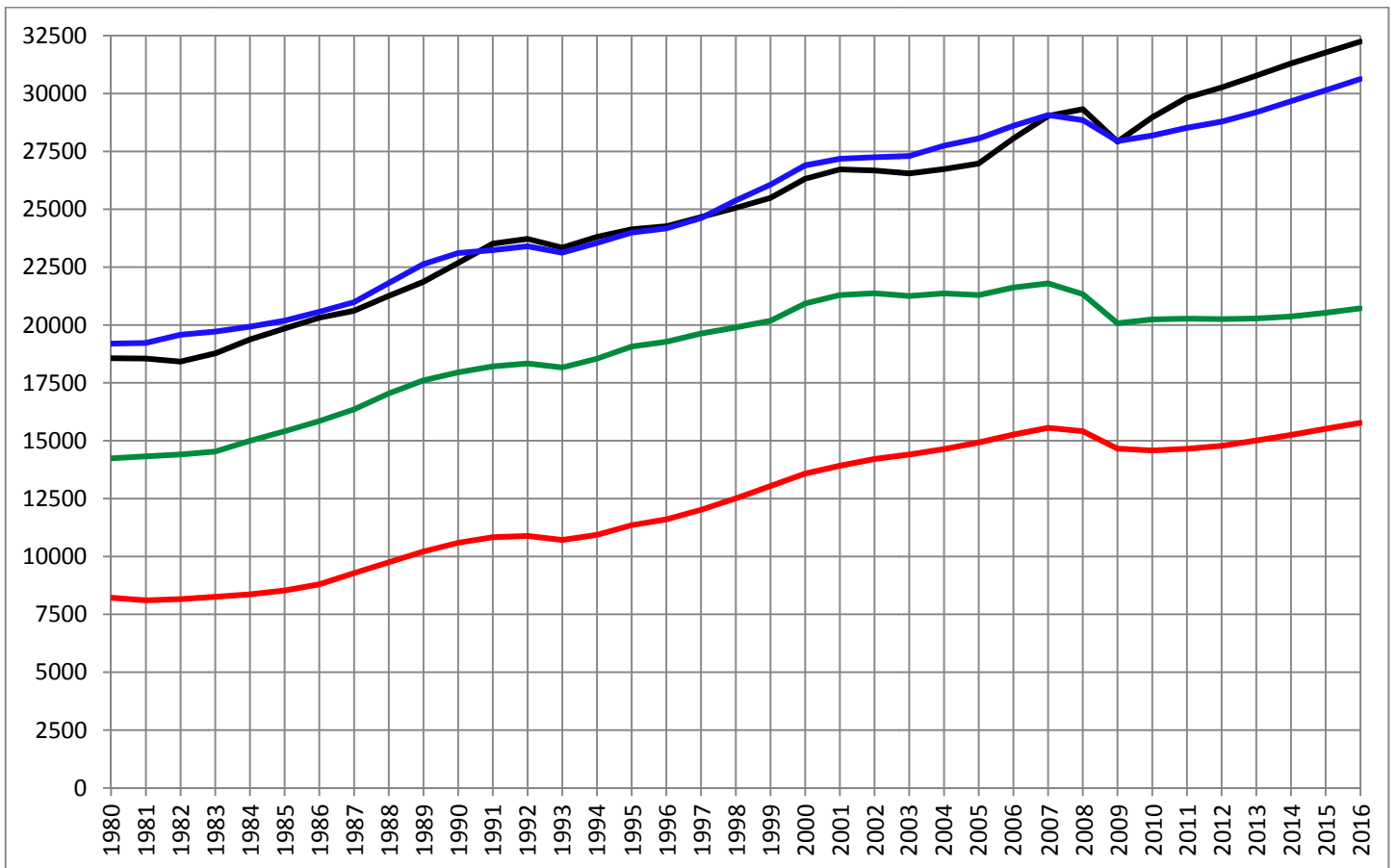


Fig. 4. Real GDP per capita, GER (2011: 29,820 €), FRA (28,520), ITA (20,274), SPA (14,651), estimates after 2010  
<http://www.imf.org/external/pubs/ft/weo/2011/02/weodata/weoselgr.aspx>

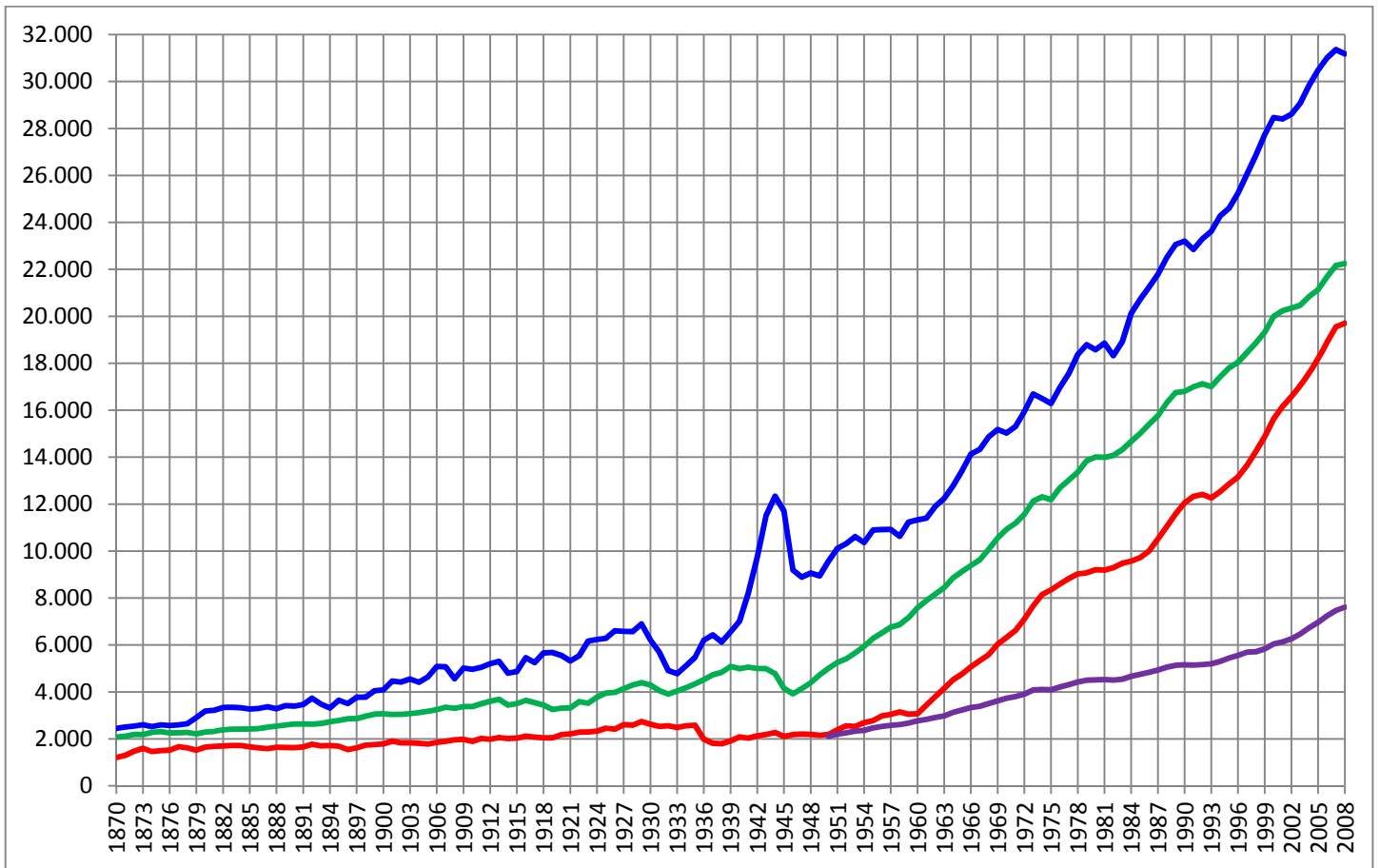


Fig. 5. Real GDP per capita (1990 International Geary-Khamis dollars), USA, Western Europe (12), Spain, World  
[www.ggd.net/maddison/Historical\\_Statistics/horizontal-file\\_02-2010.xls](http://www.ggd.net/maddison/Historical_Statistics/horizontal-file_02-2010.xls)

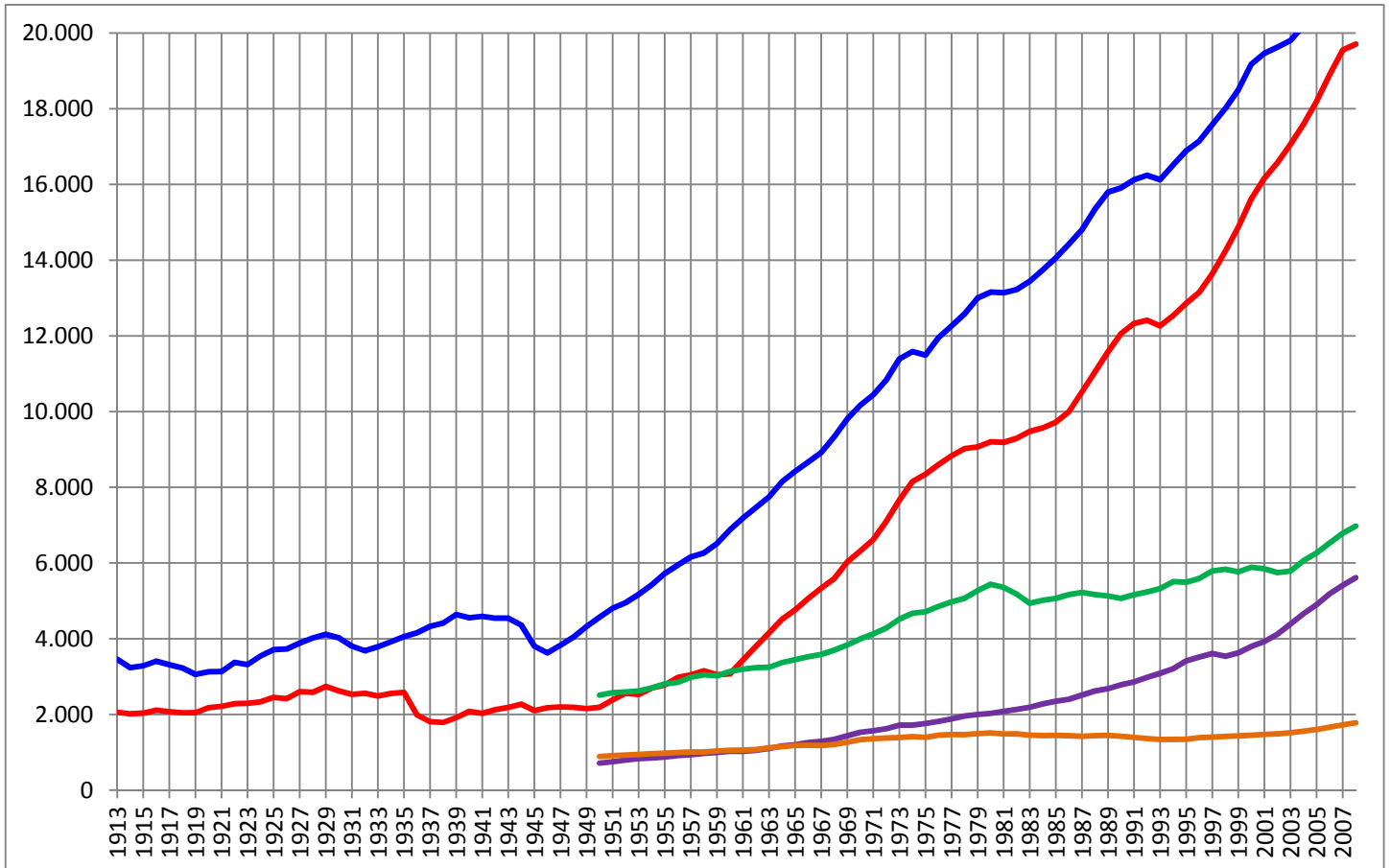


Fig. 6. Real GDP per capita (as in Fig. 5), Western Europe, Spain, Latin America, Asia, Africa

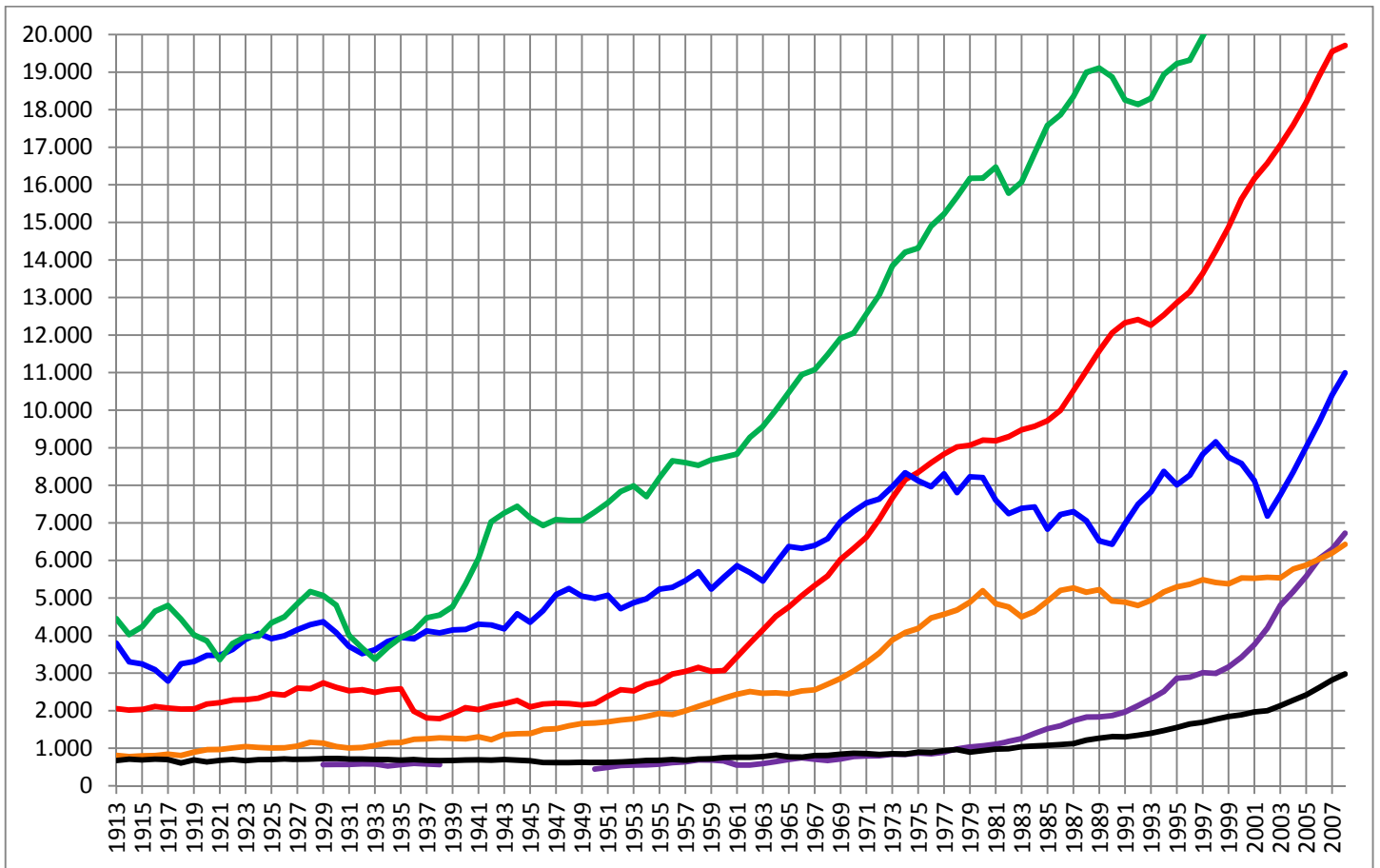


Fig. 7. Real GDP per capita (as in Fig. 5), Canada, Spain, Argentina, China, Brazil, India

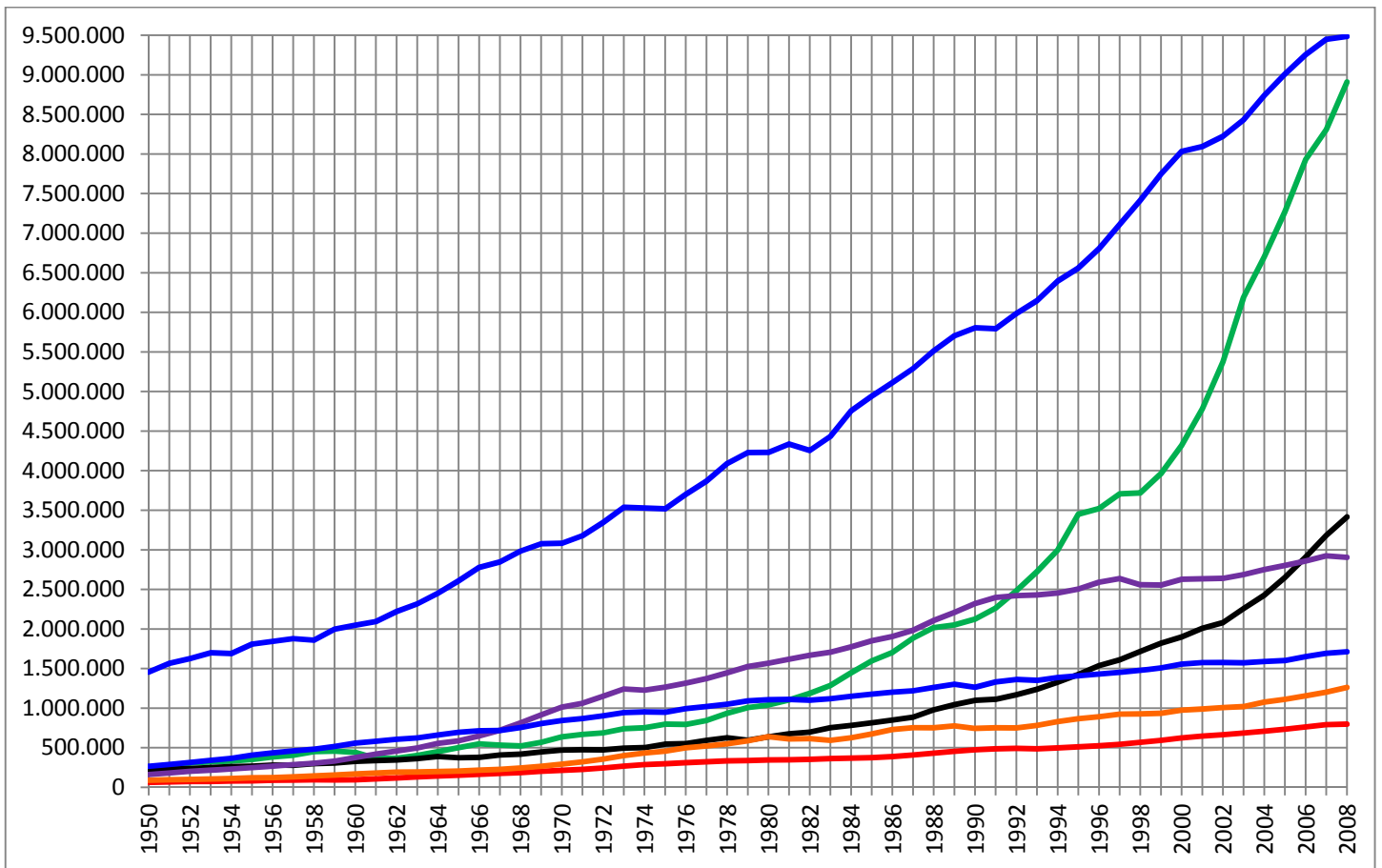


Fig. 8. Real GDP (as in Fig. 5), USA (2008: 9,485,136), China (8,908,894), India (3,415,183), Japan (2,904,141), Germany (1,713,405), Brazil (1,262,279), Spain (797,927)

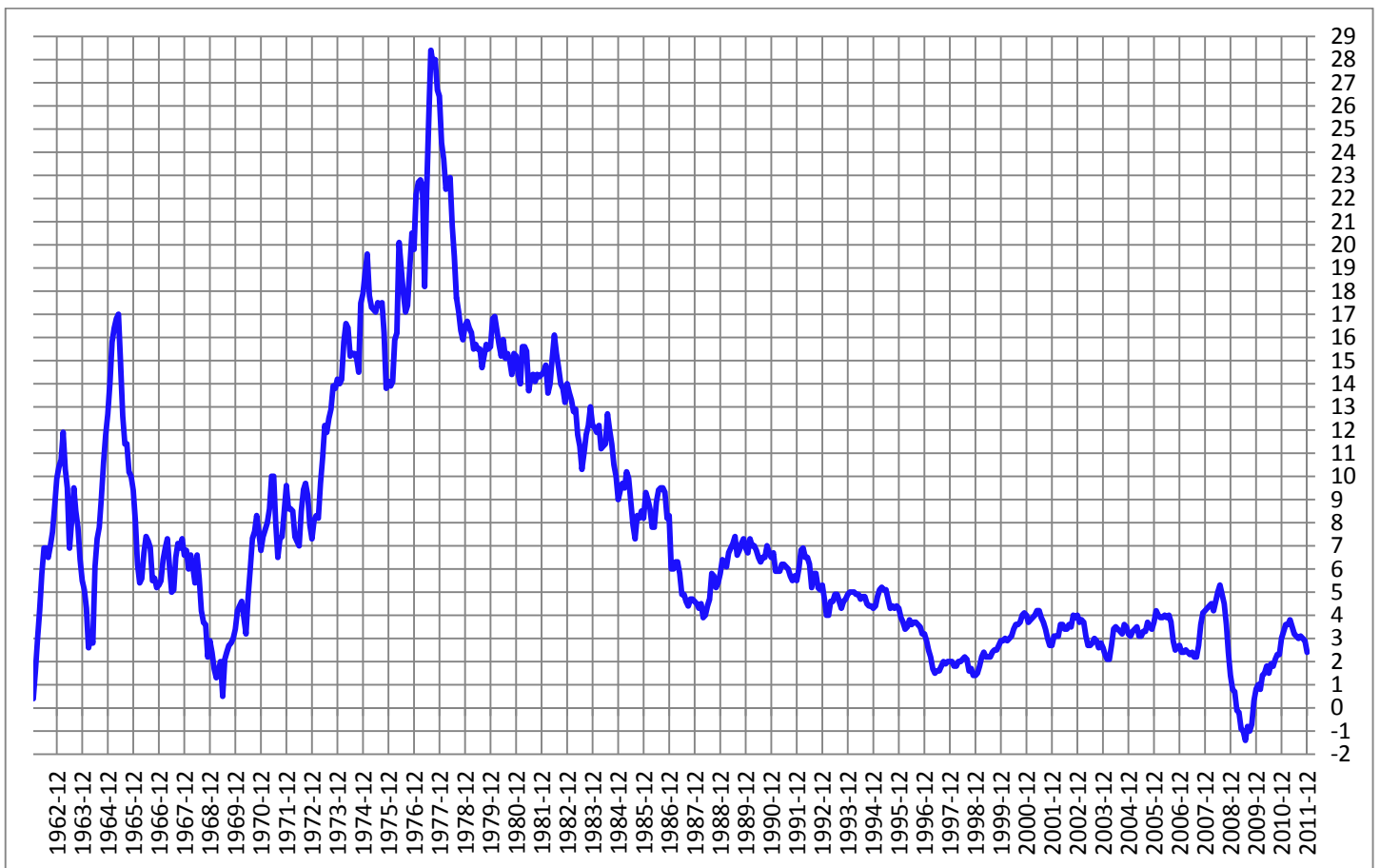


Fig. 9. Spain, CPI inflation rate · <http://www.ine.es/jaxi/menu.do?type=pcaxis&path=%2Ft25/p138&file=inebase&L=0>

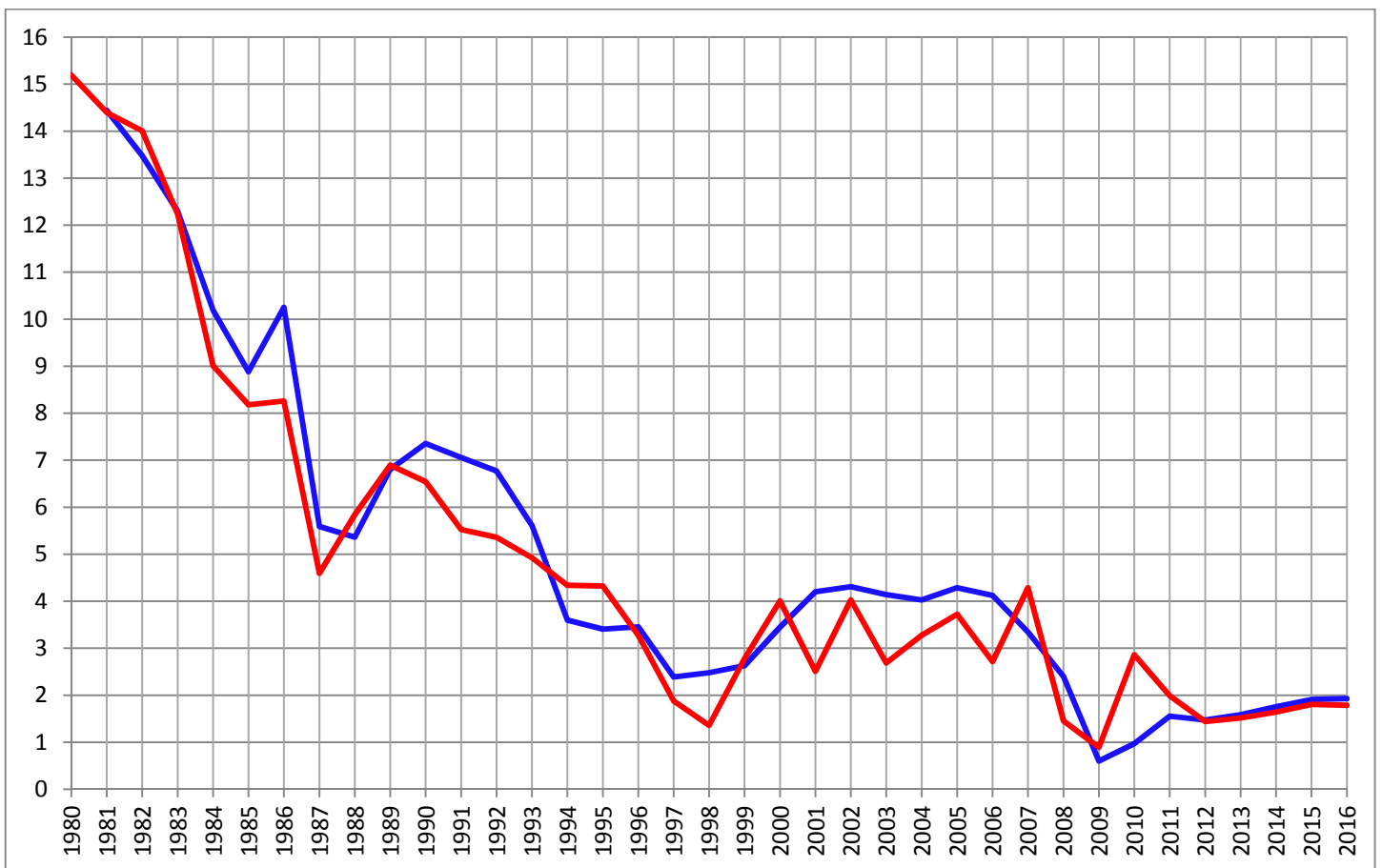


Fig. 10. Spain, CPI inflation rate and GDP deflator inflation rate (Source: as in Fig. 1)

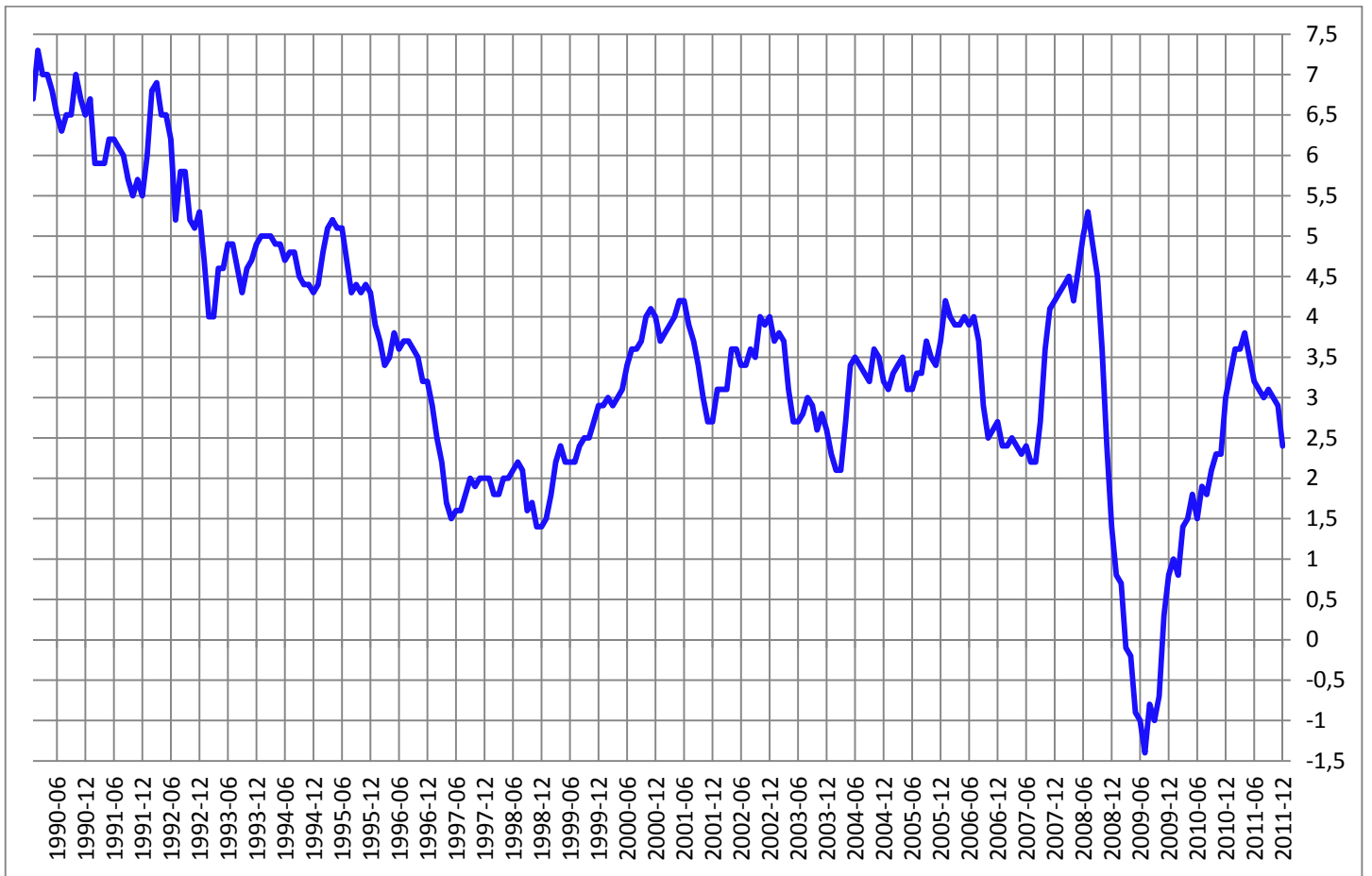


Fig. 11. Spain, CPI inflation rate, Jan. 1990 – Dec. 2011 (Source: as in Fig. 9)

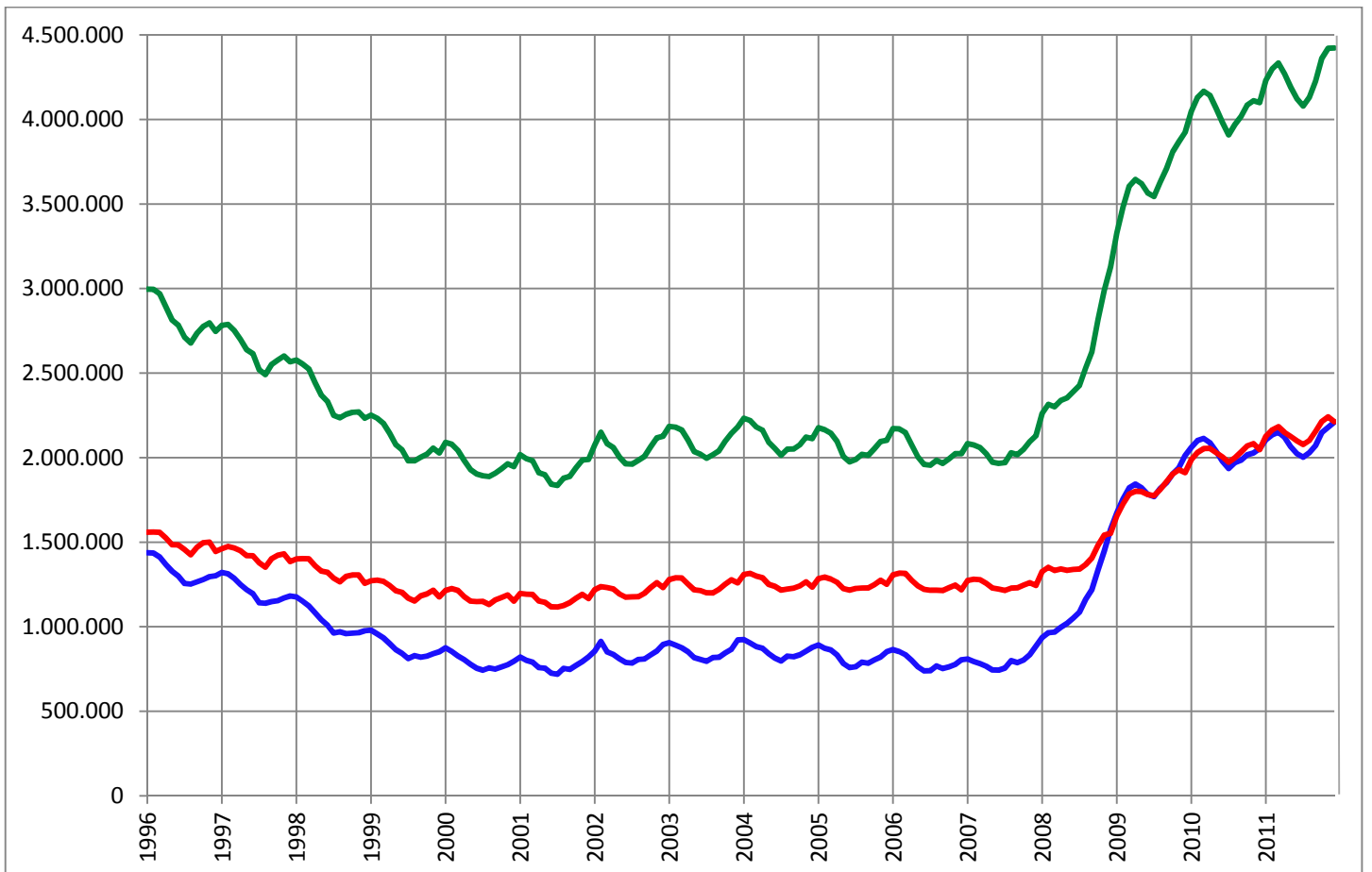


Fig. 12. Spain, registered unemployment (total, women, men) · <http://www.meys.es/series/>

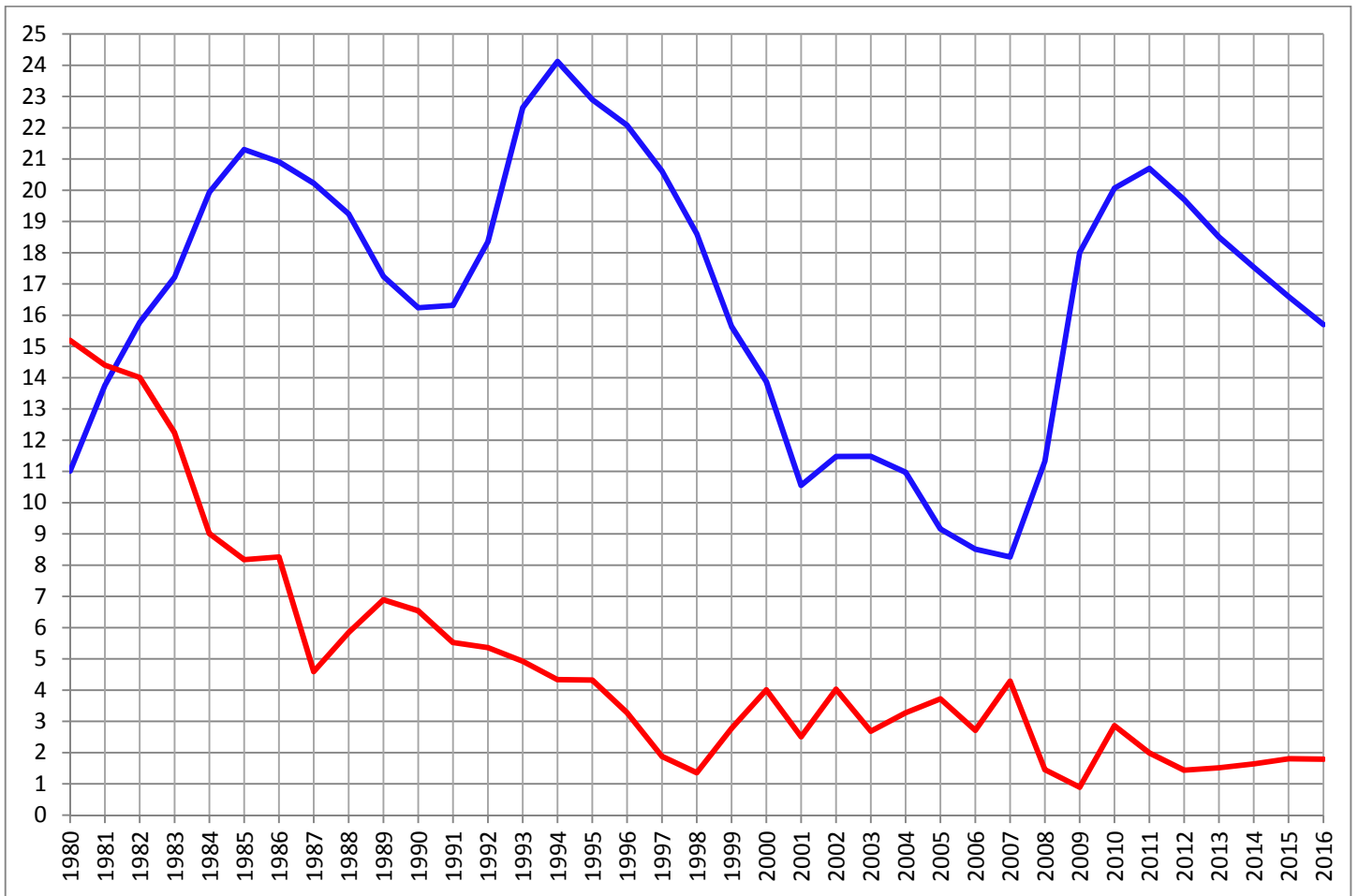


Fig. 13. Spain, unemployment rate (2011 Q4: 22,85%), inflation rate (Dec. 2010 – Dec. 2011: 2'4%) (Source: as in Fig. 1)

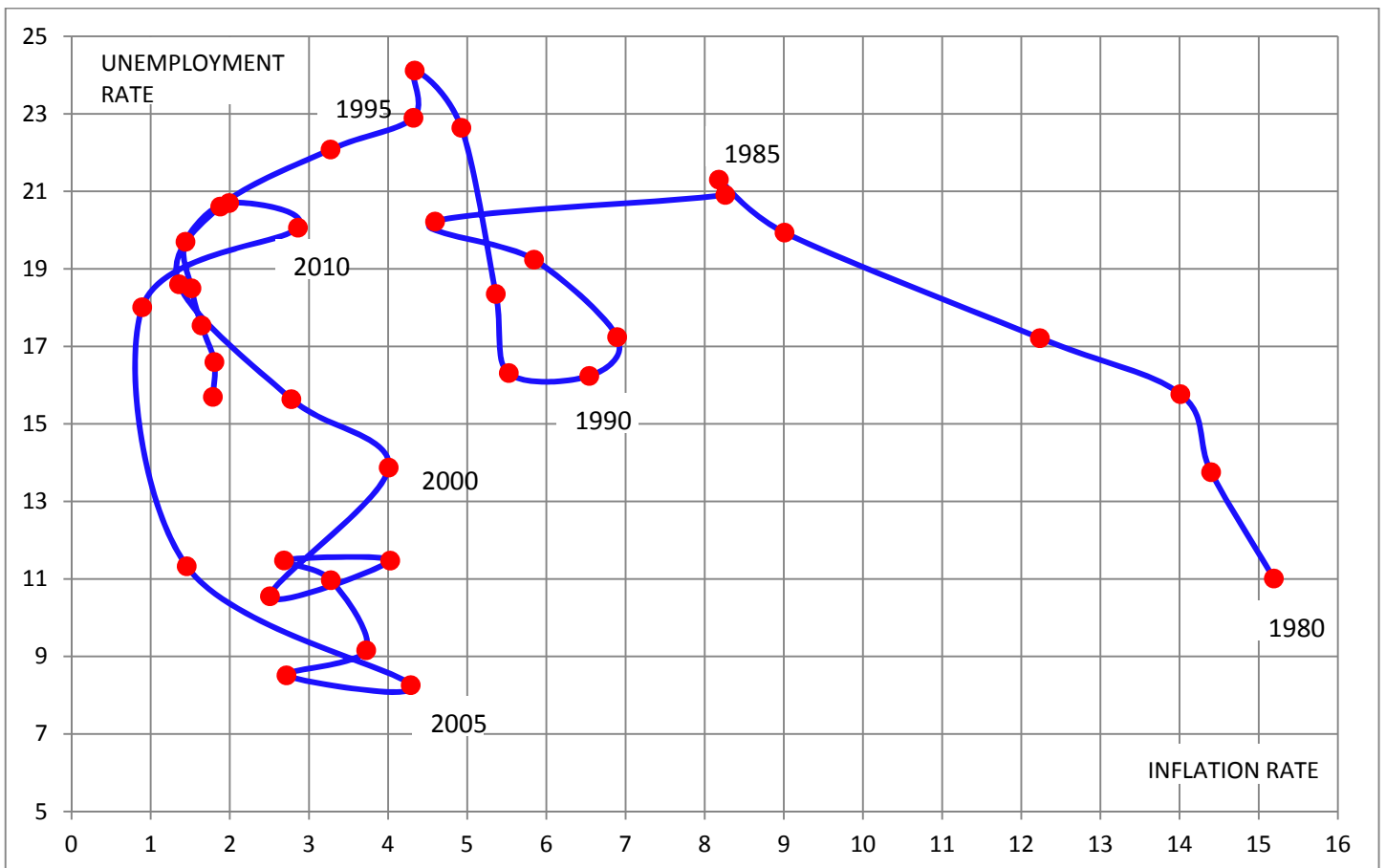


Fig. 14. Spain, Phillips curve (Source: as in Fig. 1)

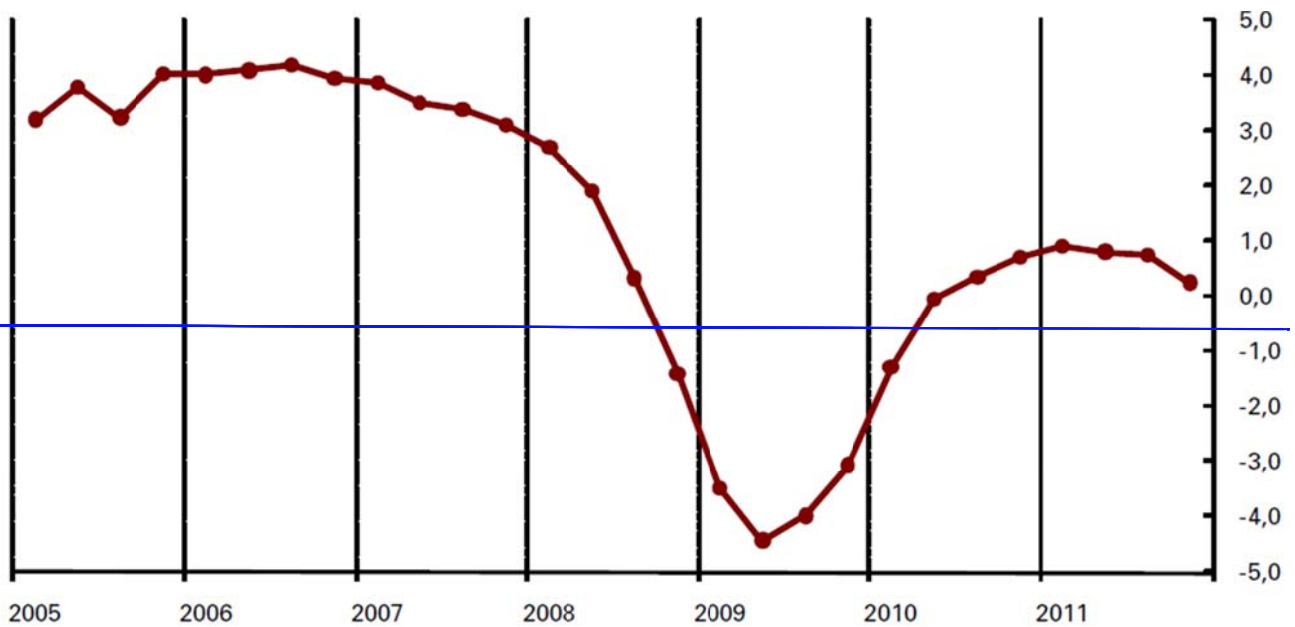
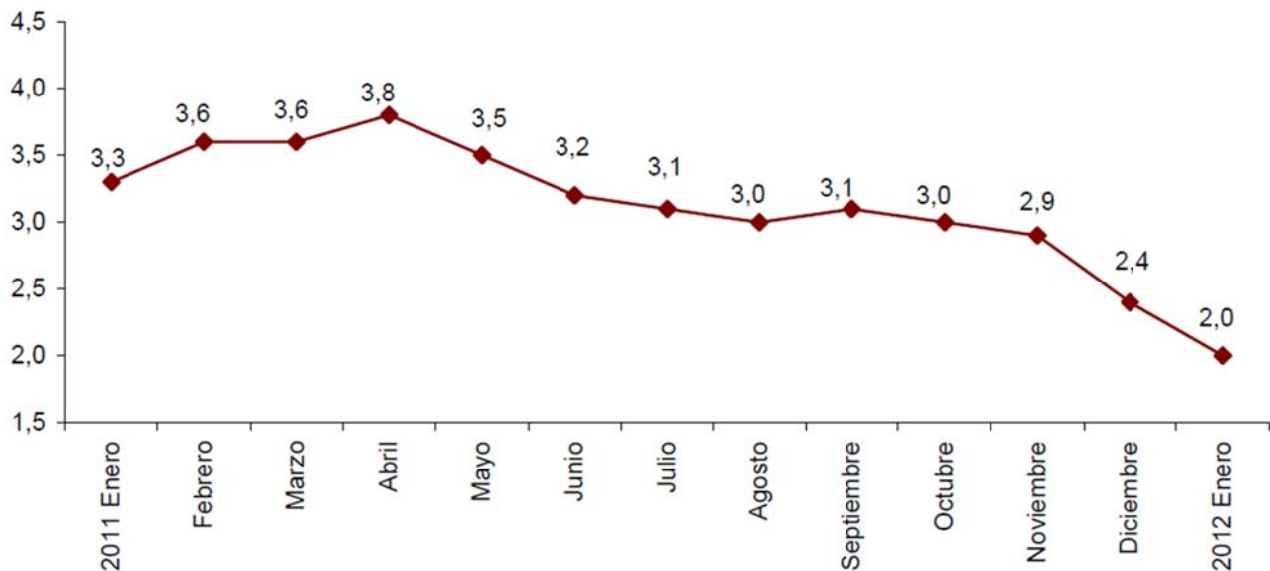


Fig. 15. Spain, GDP growth (2010 Q4 - 2011 Q4: 0,3%) · <http://www.ine.es/prensa/cntr0411a.pdf>

### Evolución anual del IPC, base 2011 <sup>(1)</sup>

General



<sup>(1)</sup> El último dato se refiere al indicador adelantado

Fig. 16. Spain, CPI inflation rate · <http://www.ine.es/daco/daco42/daco4218/ipce0112.pdf>

### Resultados nacionales

(Continúa)

|  | Trimestre actual | Variación sobre el trimestre anterior |            | Variación sobre igual trimestre del año anterior |            |
|--|------------------|---------------------------------------|------------|--|------------|
|  |                  | Diferencia                            | Porcentaje | Diferencia                                       | Porcentaje |

#### 1. Población de 16 años y más por sexo y relación con la actividad económica

| AMBOS SEXOS                |          |        |       |        |       |
|----------------------------|----------|--------|-------|--------|-------|
| Población de 16 años y más | 38,508.2 | 20.4   | 0.05  | -4.3   | -0.01 |
| Activos                    | 23,081.2 | -53.4  | -0.23 | -23.6  | -0.10 |
| - Ocupados                 | 17,807.5 | -348.7 | -1.92 | -600.6 | -3.26 |
| - Parados                  | 5,273.6  | 295.3  | 5.93  | 577.0  | 12.29 |
| Inactivos                  | 15,427.0 | 73.8   | 0.48  | 19.4   | 0.13  |
| Tasa de actividad          | 59.94    | -0.17  | -     | -0.05  | -     |
| Tasa de paro               | 22.85    | 1.33   | -     | 2.52   | -     |

<http://www.ine.es/daco/daco42/daco4211/epa0411.pdf>